



RERA No.: P-OTH-25-5912

WHERE
MODERN
LIVING
MEETS
TIMELESS VALUE

ICON REALTY PRESENTS IIT GREENS SIMROL



IIT Greens is a landmark residential plotting project by Icon Realty, strategically located at Simrol, right in front of IIT Indore on the 250 ft. wide Indore-Khandwa Highway. Designed with a focus on smart investment, lifestyle, and rapid development, it promises both comfort and high growth potential.

Featuring premium plots ranging from 800 to 1000 sq.ft.,

IIT Greens combines modern living with world-class amenities, including a multi-utility sports court, themed gardens, kids' play area, temple, and landscaped green surroundings. The project is secured with a closed boundary wall campus, ensuring safety and peace of mind for every family.

ABOUT THE PROJECT

Indore's very **first residential plotting project, ready for possession in just 6 months.**





LOCATION ADVANTAGE

INDORE'S EMERGING REAL ESTATE &
INFRASTRUCTURE HOTSPOT.



IIT Indore Campus
1 min



Choitram Hospital
10 mins



**MR-10,
Super Corridor**
10 mins



City Centre
25 mins



**Indore Railway
Station**
50 mins

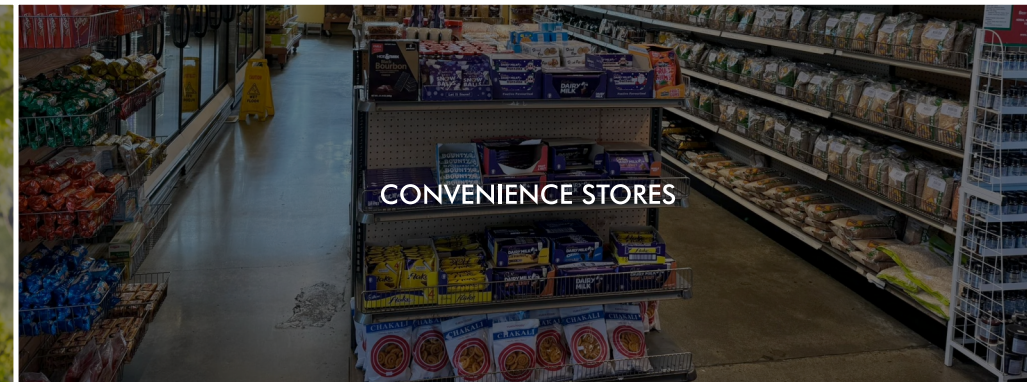
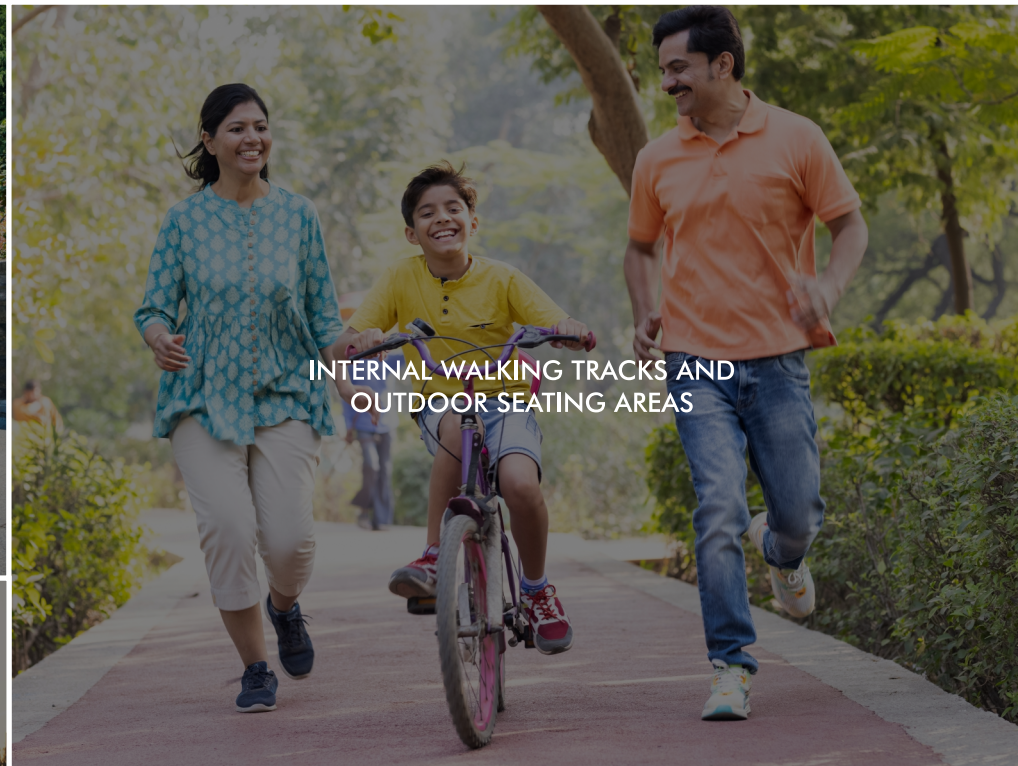
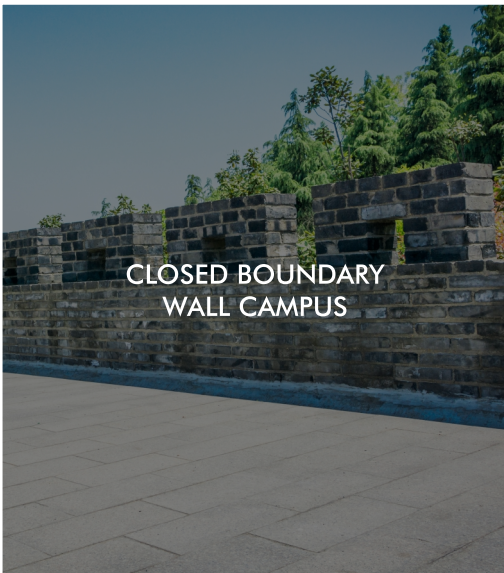


**Devi Ahilya Bai
Holkar Airport**
60 mins



Direct access to Indore-Khandwa Highway

PROJECT AT A GLANCE



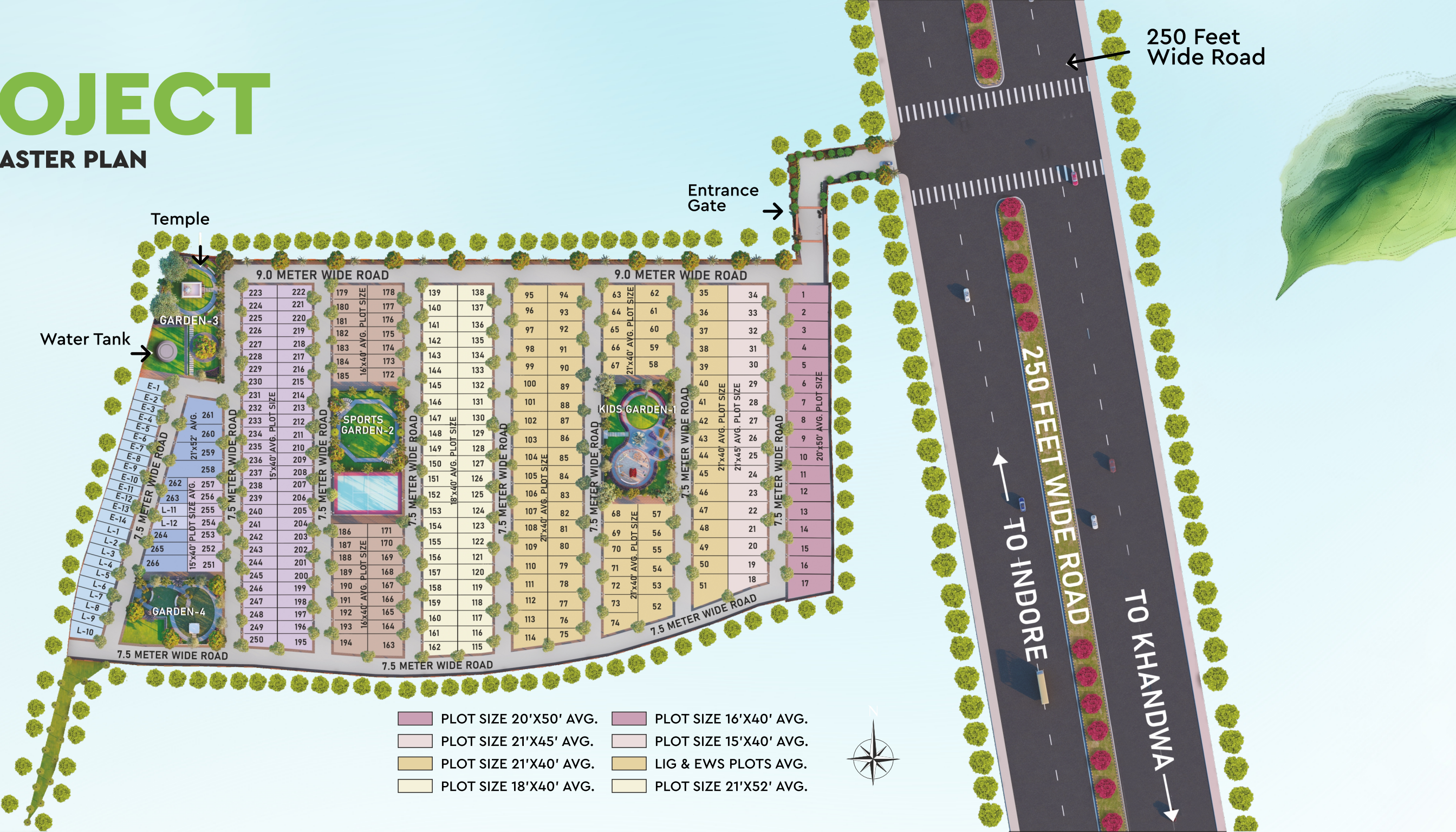
WHY IIT GREENS?

- Because **prime investment** begins with location- and nothing is better than being right **opposite IIT Indore**
- Because **modern living** needs connectivity- and the 250 ft. wide **Indore-Khandwa Highway** brings the city to your doorstep
- Because families deserve more than plots -they deserve **gardens, play areas, and spaces** that grow with them
- Because every community needs balance - a **temple, sports court, and greenery** all within reach
- Because safety is **peace of mind** and a **gated boundary campus** ensures just that
- Because life is moving fast and you deserve a **home delivered in under one year**



PROJECT

MASTER PLAN





Thoughtfully Planned Layout

Vastu-friendly plots with efficient design



Walkable, Connected Living

Smooth internal roads & easy community access



Green & Active Spaces

Landscaped gardens, jogging tracks, and fitness corners



Wellness at Your Doorstep

Areas for yoga, meditation, and outdoor play



Complete Living Experience

Residential plots with supporting amenities for daily convenience

CRAFTED FOR YOUR LIFESTYLE

Tailored to match your dreams, designed to grow with your family.





**WHERE SMART INVESTMENT
MEETS MODERN LIVING.**

Address: Opposite I.I.T Gate, Simrol, Dist. Indore (M.P.)

Call: 94259-42510

Call & Book now to avail exclusive offers

SITE VISITS AVAILABLE BY APPOINTMENT.